



St Michael's
Association Inc

Annual Report

Music

Car wash

ART

Gardening

Cooking

PCYC

2011



Contents	Page
President's Report	3
CEO's Report	4
Board of Management	5
Board Meetings	6
Life Membership	6
Management Team	7
A New Look	8
Guiding Values	9
Highlights	10
Financial - Overview	11
Financial - Auditor's Report	12
Financial - Operating Statement	14
Financial - Cash Flow Statement	16
Financial - Financial Position	17
Financial - Notes	18
Services Offered at St Michaels	22

Developing Independence for

Life



President's Report



Therese von Samorzewski

I am very pleased to present the President's Report for the 2010-11 Financial Year.

At the end of 2010, the Board members, staff, clients and their families thanked and said farewell to the CEO for the last seven years, Mr Alex Huntir.

During his time at St Michaels, Alex helped to bring the Association into a new era which involved development of new programs, bringing online up-to-date management procedures and policies, building of the independent living units, as well as also nurturing a network of valuable colleagues and contacts to help in the advancement of the goals at St Michaels.

Alex was given many thanks and good wishes as he left to live in Sydney, to take up a new position there, in January 2011.

In February 2011, Mr John W. Gilpin was appointed as the new CEO and has made an excellent transition into his role. John has worked to a very professional level to put into place a new Strategic Plan for 2011-2014 and finalise the completion of the last eight units. John has also spent considerable time to upgrade budgeting and accounting procedures, oversee the new power mains connections, is continuing negotiations to purchase the old St Michaels School site and buildings, and working with staff and clients to bring diversity and growth into the skill base of all involved at the Association.

All Programs continue to grow, renovations have been made to several units in the Desmond Wood complex and the Hall facilities have been upgraded. The grounds continue to receive improvements and plans are being developed to convert the

Terrapin into three units for new clients. In June a new Program also started which is a Pilot program for older people with disabilities.

Thank you to the special committee led by Mrs Pam Merrington, Mrs Jill Cooper and Mrs Gwen Baker for planning, organising and bringing into being the 45th Anniversary Reunion, on the 5th March held in the grounds of St Michaels. Thank you to all who attended, the Board is grateful also to Mr Donald Richards for all his input, all staff members for their support, and the Riverside Lions Club for their excellent 'hands on' help and work on the day.

Many thanks also to Riverside Lions Club and Windmill Hill Lions Club for generous donations to assist with the cost toward the Aurora substation installed as part of the power upgrade.

The Year has been a very busy time for all involved, thank you to all Board members, managers, staff and carers for all your wonderful input. Thank you also to Mr Errol Stewart

for your ongoing support. A special thanks to the Newstead community for the support of clients with disabilities living within your locality.

As the Association moves ahead in this tight financial climate, we will all need to continue to work together to retain and build on the connections made in previous years. May I invite you to continue your engagement, your loyalty, and your commitment so that we can have your support as we work to improve our communications, reduce our costs and be more innovative in the future.

The Association has ended the year in a sound financial position, and is well organised to continue to work on behalf of the clients in our care, and to meet our obligations in all relevant areas of management and governance. Thank you for attendance at the AGM, and to your ongoing commitment to St Michaels Association.

Yours gratefully,
Mrs Therese von Samorzewski OAM

Developing Independence for



CEO's report



John Gilpin

"A welcoming Organisation that Tasmanians should be proud of"

St Michaels Association, I believe, is a metaphor for the Australian way of life, "The Little Aussie Battler". Unassuming, modest and at times bashful but always going about its business without fuss or fanfare, just doing what it said it was going to do!!

I have been lucky enough to be at St Michaels since February this year and I have found, although challenging at times, an organisation that cares for the clients that it supports, cares for their families, cares for its staff and as just as important the community we serve. A welcoming organisation that Tasmanians should be proud of.

This year has seen the completion of another 8 Independent Living Units providing the balance of disability support when needed and flexibility to live in their own home.

The organisation also upgraded its electrical mains capabilities through an extensive upgrade, while significant minor works were being completed across the whole infrastructure at Hoblers Bridge Road.

Services to clients continue to grow and more importantly continue to become increasingly personalised. Our range of services is vast but not exhaustive. I invite you to read more about our services on the last page of this annual report.

St Michaels Association has long standing relationships within the community and makes this commitment. St Michaels will not take these relationships for granted, St Michaels will nurture and respect these networks and St Michaels will not rest on these established friendships but will look to build new ones.

Financially St Michaels Association has had a very solid year. While presenting a profit of \$1,047,704 is to be applauded this profit should not be misconstrued. All profits from capital grants have been re-invested into the Association, building a significant and resilient capital asset base.

The capital assets of the Organisation have grown from \$4,150,565 in 2010 to \$5,792,452 in this Financial Year. Growth on our asset base for the year of

\$1,641,887 will continue to grow over the next Financial Year.

The future for St Michaels is very bright through an inclusive strategic direction, development of support programmes for clients where they currently "fall through the gaps", capital infrastructure projects such as the purchase of the old St Michaels School and the conversion of a terrapin into additional Independent Living Units and investing in developing our staff.

With these initiatives St Michaels will continue to grow and make a significant impact in the lives of Tasmanians and their families living with physical and intellectual disabilities.

St Michaels is in a position of being resilient through capital that is intellectually and physically strong while maintaining agility through clients and community flexibility, listening and delivering on its service promise.

**John Gilpin
CEO**

Developing Independence for



Board of Management



*Therese von Samorzewski
President*

Therese has 30 years experience as Principal in local catholic schools. Now retired, Therese continues to contribute to church and school activities, including work with recent migrants at TAFE.



*Colin Foon
Vice-President*

Colin is a long-time member of the St Michaels Board, in addition to practicing as a solicitor in Launceston. Colin is also a keen supporter of local football.



*Brian Dunham
Treasurer*

Brian is a building maintenance contractor and also a family carer of a resident at St Michaels. Brian has considerable experience on the Board and chairs the Audit and Risk Subcommittee.



Jill Cooper

Jill is a career teacher and has worked with many special education children. Jill has a long involvement with the organisation through her son who is a resident at St Michaels.



Jenny Rowbottom

Jenny works in the office of a local parliamentary representative and brings a depth of knowledge and insight into the political machinery to the Board. She is a family carer of a resident at St Michaels.



Ted Sands

Having once been a support worker with us, Ted has a sound understanding of the role and philosophy of St Michaels.



Roger Tyshing

Roger is involved with local rural communities in the areas of employment, rural traineeships and community development.



Glen Cornish

Glen is the latest edition to the St Michaels Board. Now retired Glen brings over 40 years experience as a self employed Insurance Loss adjuster.

Developing Independence for



Board of Management - Meetings

The Board met 11 times during the year, the average Board Meeting lasted 1.8 hours.

Each meeting achieved a quorum of 5 members.

The average attendance at each meeting was 6 members.

As of June 2011 the board had 2 vacancies bringing the number of active members to 7

The following table indicates the attendance by each member and total number of board meetings for 2010-2011

Member	Office	Meetings attended	Total meetings
Therese von Samorzewski	President	10	11
Colin Foon	Vice-President	10	11
Brian Dunham	Treasurer	10	11
Jill Cooper		11	11
Jenny Rowbottom		10	11
Ted Sands		9	11
Roger Tyshing		10	11
Alan Conn*	*No longer active	2	2
Vacancy (2)			

Life Membership

Life membership at St Michaels is awarded for long, distinguished and voluntary contribution to the organisation.

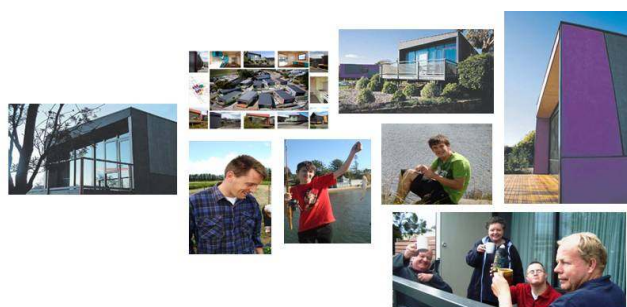
The following people have been awarded Life Memberships for their contribution since the organisation began, over 45 years ago.

Recognised for long, distinguished and voluntary contributions to the organisation

St Michaels Association Inc Life Membership Honour Board

Alan Baker	Dr Joan Rowlands
Margaret Chugg	Dorothy Smith
Clare Clark	Norm Smith
David Merrington	Dorothy Wise (deceased)
Pam Merrington	

Developing Independence for



Management team



*John Gilpin
CEO*

John brings to the Association 22 years of leading and management experience, with the last 15 years being involved in working with individuals to enhance and grow their life long learning skills (Disability and Vocational Sectors).



*Donald Richards
Disability Services*

Donald has been involved with client support at St Michaels for over 40 years. His extensive knowledge of support approaches and staff supervision are often called-on during the variety of roles performed at St Michaels.



*Rod Campbell
Disability Support &
Community Development*

Rod brings to St Michaels a vast range of skills, knowledge and experience in business development, project management, marketing, publishing, fundraising, promotional and disability support initiatives for the organisation.



*Katrina Fisher
Corporate Services*

Katrina brings 20 years of financial and IT experience to St Michaels having worked in a Chartered Accounting firm as an accountant and at the same time managing the internal IT networks and software.

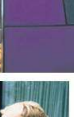


*Robert Boon
Training, Quality &
Facilities*

Robert brings to St Michaels 28 years of experience and more recently training in parks and gardens, wholesale and retail nursery, tree surgery and landscaping.

"We are looking forward to a bright future with this quality, energetic team"

Developing Independence for

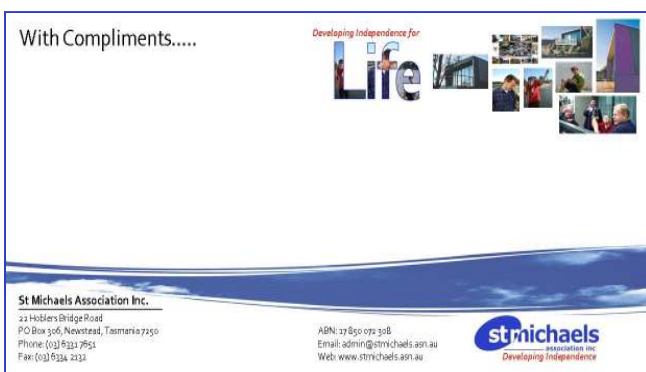


A New Look

Developing Independence for life logo



With Compliments slip



Over the past short period St Michaels has been working on a new style guide, effectively creating a new suite of marketing collateral for the organisation.

Some of you may have noticed that our brand has been edited and new images have been incorporated into our general stationery. Including; letter head, facsimile, email signatures, with compliments slips, business cards, statements, receipts, envelopes etc.

The Examiner Newspaper have also kindly assisted us in our endeavours by designing a new look and feel for our general advertising and the creation of a new logo - Developing Independence for Life.

We believe this new brand captures the vision of St Michaels in developing independence, portrayed through a series of images superimposed over text and specific images depicting community, housing, inclusion and independence.

Developing Independence for



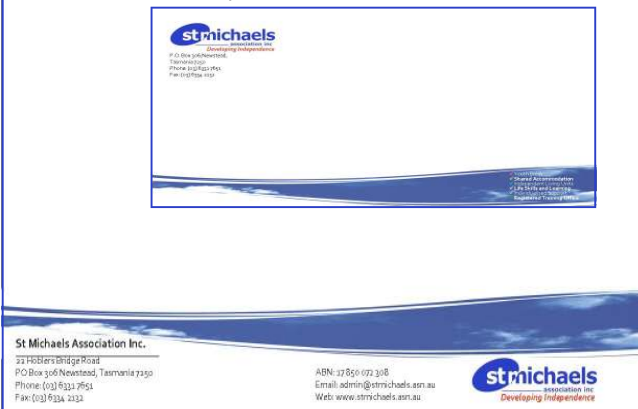
Letterhead



Business card - front and back



Envelope



We at St Michaels are excited at our new marketing collateral.

We welcome your feedback on our new stationery, please feel free to forward your com-

ments directly to Rod Campbell, Community Development Manager.

Rod.Campbell@stmichaels.asn.au or phone 6331 7651.

Guiding Values



John Gilpin

“Our strategic plan of inclusive engagement will maintain our growth and secure our future for years to come”

Our Values

Value One:

St Michaels will treat all people with care and respect.

Value Two:

St Michaels will encourage fairness, openness and equity in all relationships.

Value Three:

St Michaels will innovate and create supportive programmes through listening to the needs of our clients, their carers, their families and the community.

Value Four:

St Michaels will build on programmes to create fun and a rewarding community through quality processes and continuous improvement.

Value Five:

St Michaels will provide strong governance through leadership, relationships and transparency.

Value Six:

St Michaels will encourage families to participate and decide on the type, kind and level of support they may need.

Value Seven:

St Michaels will continue to foster trust and honesty through regular, transparent and open communication.

Value Eight:

St Michaels will continue to build and maintain the right culture, attitude and value systems for our clients, their families, carers and key stakeholders.

Our Intent Statements

In response to our mission for the period 2011-14, St Michaels Association Inc. has three key Statements of Intent:

Intent One:

We are recognised as a centre of excellence for the provision of customised support services for clients.

Intent Two:

To provide a safe, supportive and enriching community for our clients, staff, volunteers, members and visitors.

Intent Three:

The future of the organisation is safeguarded by enhancing our core capabilities.

Our Vision

Developing Independence through maximising the individual qualities of Tasmanians living with a disability.

Our Mission

To support the physical and emotional needs of our clients and their families through the provision of personalised care programmes, training and a variety of accommodation services.

Summary:

Through establishing open communication and confidence with our clients, their families, our community and our stakeholders in every St Michael's programme or service we will create greater awareness of St Michael's Association Inc. within the Disability Sector. This inclusive engagement will maintain our growth within the sector.

Developing Independence for



Highlights



John Gilpin

“Our Units are recognised as a resounding success as the units provide a safe environment for the clients”

Training Services

St Michaels was successful in gaining funding from Skills Tasmania to deliver skill sets to Tasmanians living with disabilities working for Australian Disability Enterprises. This programme called “Common Good” has been successfully implemented and is on target.

Independent Living Units

Completion of the last 8 independent living units during 2010/11 brings the total amount of independent living units at the St Michaels Complex to 21.

Our Units are recognised as a resounding success as the units provide a safe environment for the clients. The sense of independence has assisted in broadening their community inclusion and personal development skills.

Talking with the great community

A definite highlight for St Michaels was the participation at Carer, Targa and Gearing Up Expos. At these opportunities we were able to discuss our services to a broad range of people.

Financial Management

Systems have been improved and or modified to give the management team greater access to financial information. Real time value of this information allows resources to be better allocated to our special needs clients.

Celebrations

On Saturday the 5th of March we celebrated St Michaels Associations 45th Birthday. Guests celebrated the event with a BBQ on our grounds with many guests represented from the 5 decades.

Relationships

A very strong working relationships has been formed with our Gateway Service Provider. An open and transparent approach with Baptcare has assisted greatly in identifying long term strategies that have seen some of our special needs clients make some significant improvements.

Our newsletter is on the verge of becoming electronic and is set to have a circulation of 1200 readers through building and maintaining a client relationship management database.

Our Staff

Through an outstanding consultation & negotiation process between staff and management we were able to sign off and implement a Multi-Employer Enterprise Agreement that saw staff receive a 6.1% pay rise and St Michaels have working flexibility.

New Programmes

St Michael’s, partnering with Self Help, has started to deliver a programme on how long term people working with a disability may transition from the workplace. The programme is designed to give participants exposure to activities other than just work.

St Michaels day programme continues to broaden with additional activities such as water polo, music activities and even day trips to the library.

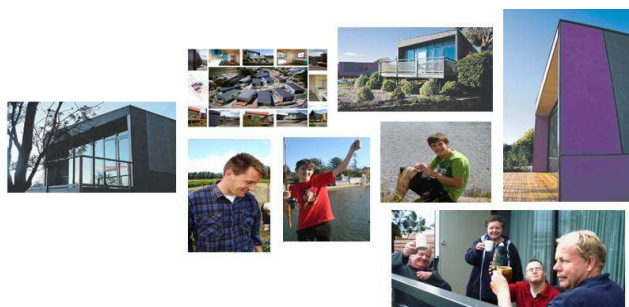
Mains Connection

With capital projects completed and planned for the future we required our electrical mains upgraded to handle the new load and future demand. This is now complete.

Strategic Plan

An exhaustive communication process through three levels of the Association, namely, the Board of Management, the staff and the management team culminated in the finalisation and implementation of our organisational strategy moving forward into 2011-14

Developing Independence for



Financial Report - Overview

Your Board Members submit the financial report of St Michaels Association Inc. for the financial year ended June 30, 2011.

Principle Activities

The principle activities of the Association during the financial year were the provision of Community Service Programmes for Tasmanians & families living with intellectual disabilities:

- Desmond Wood - Student accommodation
- C.I.P. funded group homes
- Merton House - supported accommodation
- Desmond Wood - Independent living units
- Newstead Independent living units
- St Michaels Day Programme
- Individual Funding agreements - specific support
- Community Outreach Programme
- Youth Break - Respite Support Programme
- Self Help - Transition Programme
- Registered Training Organisation (trading as Training Day)

Significant Changes

As reported previously, grants received under the CHP (04-05, 06-07 & 09) are held as an amortising mortgage that is given over 30 years. This contingent liability has been recorded in the Financial Report Notes section.

Outstanding Results

The surplus from ordinary activities amounted to \$48,032 and with income from non-operating activities the surplus from all operations amounted to \$1,047,704.

In the opinion of the Members of the Board:

1. The accompanying Operating Statement is drawn up so as to give a true and fair view of the position of the Association for the year ended June 30, 2011.
2. The accompanying Statement of Cash flows is drawn up so as to give a true and fair view of the cash inflows and outflows of the Association for the year ended June 30, 2011.
3. The accompanying Statement of Financial Position is drawn up so as to give a true and fair view of the state of affairs of the Association as at June 30, 2011.
4. At the date of this statement there are reasonable grounds to believe that the Association will be able to pay debts as and when they fall due.

The Accounts of the Association have been drawn up in accordance with the applicable Australian Accounting Standards.

This Statement is made in accordance with a resolution of the Board and is signed for and on behalf, dated this September 15, 2011 of the Board by:



Therese von Samorzewski, President



Brian Dunham, Treasurer

Financial Report - Independent Auditor's Report

**INDEPENDENT AUDIT REPORT
TO THE MEMBERS
St Michael's Association Inc**

**for the period
1 July 2010 to 30 June 2011**

Scope

I have audited the attached (special purpose) financial statements, being the Profit and Loss Account and Balance Sheet and notes to and forming part of the financial statements of the Client for the above period. The client is responsible for the financial statements. I have conducted an independent audit of these financial statements in order to express an opinion on them to the members.

My audit has been conducted in accordance with Australian Auditing Standards to provide reasonable assurance as to whether the financial statements are free of material misstatement. My procedures included examination, on a test basis, of evidence supporting the amounts and other disclosures in the financial statements, and the evaluation of accounting policies and significant accounting estimates. These procedures have been undertaken to form an opinion whether, in all material respects, the financial statements are presented fairly in accordance with Australian Accounting Standards and other mandatory professional reporting requirements and statutory requirements so as to present a view which is consistent with our understanding of the committee's and economic entity's financial position, the results of their operations and their cash flows.

The audit opinion expressed in this report has been formed on the above basis.

Audit Opinion

In my opinion, the financial statements of the Client are properly drawn up for the above period:

- (a) so as to give a true and fair view of: the state of affairs, and of the profit and cash flows of the economic entity.
- (b) in accordance with applicable Accounting Standards and other mandatory professional reporting requirements.
- (c) the rules relating to the administration of the funds of the association have been observed.



Peter G Nesbit
9 Lenstan Street
Norwood Tasmania 7250

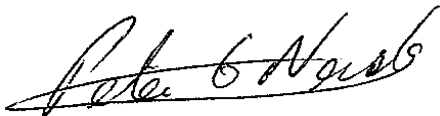
14/9/2011

Financial Report - Independent Auditor's Report (cont'd)

Personnel List

Objective: To determine people of responsibility
Result: Satisfactory
Notes: see below

Position	Name	Address
President	Therese von Samorzewski	76 Atkinson Road, Grindelwald 7277
Vice President	Colin Foon	c/- P L Corby & Co, 4 Paterson Street, Launceston 7250
Treasurer	Brian Dunham	10 Kootara Place, Trevallyn 7250
Committee	Ted Sands	24 Longford Close Longford 7301
Committee	Jill Cooper	29 Beverley Hills Road Newstead 7250
Committee	Roger Tyshing	353 St Leonards Road St Leonards 7250
Committee	Jenny Rowbottom	11 Cooper Crescent Riverside 7250



Peter G Nesbit
9 Lenstan Street
Norwood Tasmania 7250

14/9/2011

Financial Report - Operating Statement - Year end June 30, 2011

	Notes	2011 \$	2010 \$
Income			
Community Water Grant		0	-34,441
Day Program Income		19,845	18,871
Donations Received		68,329	18,019
Donations F/R		8,792	5,817
Garden Program			47,165
Interest Received		33,361	9,202
Partnerships to Jobs Program		0	24,520
Profit on Sale of Assets		18,032	14,049
Subscription Income		92	190
Youth Break Launceston		185,424	185,424
Grants Received - Salaries		1,481,640	1,422,300
Grants Received - Other		16,859	29,840
Hydro - Power & Hot Water		8,967	0
Boarding Fees - D/Wood Units		15,490	15,618
Board Fees Student Accommodation		34,029	40,873
Rent Newstead Units		94,797	64,260
L/hold Premium - Newstead Unit		140,000	0
Boarding Fees - Merton House		50,772	49,432
Transport Fees		3,458	4,088
Rent Shed St Michaels		2,400	0
Contract Care		209,235	288,518
Contract Care Management Fees		-56,373	-52,169
Traineeship Wage Subsidies		4,000	40,994
User Choice Training		86,809	44,510
RTO		660	15,740
Workers Comp. Reimbursement		479	34,807
Insurance Premiums Recouped		4,265	662
Sundry Income		859	639
Total Income		2,432,222	2,288,927
Expenses			
Accounting Services		5,447	4,155
Advertising & Promotion		3,295	2,963
Audit Fees		31	1,355
Bad Debts		2,042	0
Bank Fees & Charges		2,174	1,948
Cleaning & Rubbish Removal		1,410	2,217
Computer Maintenance		9,351	4,433
Conferences & Conventions		1,990	2,743
Consultancy Industrial Relations		3,947	2,764
Depreciation - Buildings		146,678	106,148

Financial Report - Operating Statement - Year end June 30, 2011 (cont'd)

	Notes	2011 \$	2010 \$
Expenses - continued			
Depreciation - Plant & Equipment		34,298	32,255
Depreciation - Motor Vehicle		13,355	20,763
Food		47,826	48,647
Hydro & Heating		47,535	26,221
Insurance		106,781	115,342
Interest		27	0
Laundry		2,261	2,506
Legal Fees		3,739	574
Licences		1,289	1,688
Loss on Sale of Assets		1,071	9,027
Materials & Supplies		31,853	75,205
Medical		13,019	11,806
Meeting Expenses		2,407	6,078
Membership Fees & Subscriptions		4,316	1,082
Motor Vehicle		31,513	30,727
Office Equipment & Upgrades		0	518
Other Employer Expenses		1,192	883
Petty Cash		109	0
Plant & Equipment Hire		22,909	12,816
Printing, Postage & Stationery		11,974	13,754
Rates & Land Tax		6,821	8,270
Repairs		52,578	47,837
Replacements		2,921	15,473
Wages & Salaries		1,507,375	1,681,733
Security & Fire Alarm		11,237	7,596
Staff Leave Provisions		7,868	-21,877
Staff Training		12,062	12,948
Student Activities		9,234	9,766
Strategic Planning		0	48
Superannuation		135,106	144,420
Telephone		17,450	20,427
User Choice Training		67,700	22,600
Total Expenses		2,384,189	2,487,857
Net Operating Profit/(Loss)		48,032	-198,930
Non-Operating Income			
Grants Rec'd - Newstead Units	11	999,672	450,328
Total Non-Operating Income		999,672	450,328
Net Profit/Loss		1,047,704	251,398

Financial Report - Cash Flow Statement - Year end June 30, 2011

	Notes	2011 \$	2010 \$
CASH FLOWS FROM OPERATING ACTIVITIES			
Receipts from members		92	190
Receipts from clients		831,450	649,143
Grants received - Operating		1,471,506	1,452,139
Traineeship Wage Subsidies		4,000	40,994
Donations received		77,121	23,836
Interest received		19,714	9,202
		2,403,883	2,175,504
Payment to suppliers		212,996	510,115
Payment to employees		1,642,481	1,826,151
		1,855,477	2,336,266
NET CASH PROVIDED BY OPERATING ACTIVITIES		548,406	(160,762)
CASH FLOWS FROM INVESTING ACTIVITIES			
Cash utilised in acquisition of assets		(1,793,394)	(384,733)
Cash received from disposal of assets		43,556	79,131
Cash received from Capital Grants		999,672	450,328
NET CASH PROVIDED BY INVESTING ACTIVITIES		(750,166)	144,726
CASH FLOWS FROM FINANCING ACTIVITIES			
Cash received from Client Advances		264,574	20,000
Client advance funds utilised during the year		(42,000)	0
NET CASH PROVIDED BY INVESTING ACTIVITIES		222,574	20,000
NET INCREASE (DECREASE) IN CASH HELD FOR THE YEAR		20,814	3,964
CASH AT 1 JULY, 2010		461,071	457,107
CASH AT 30 JUNE, 2011		481,885	461,071
RECONCILIATION TO FINANCIAL STATEMENTS			
Cash on Hand	2	537,457	461,071
Bank Overdraft	5	(55,572)	0
CASH AT 30 JUNE, 2011		481,885	461,071

Financial Report - Statement of Financial Position - As at June 30, 2011

	Notes	2011 \$	2010 \$
Current Assets			
Cash	2	537,457	461,071
Receivables	3	40,271	63,581
		577,728	524,652
Non Current Assets			
Land & Buildings	4	5,020,714	3,374,669
Plant & Equipment	4	154,999	195,806
Motor Vehicles	4	39,012	55,438
		5,214,725	3,625,913
Total Assets		5,792,452	4,150,565
Current Liabilities			
Creditors & Borrowings	5	131,276	68,491
Provisions	6	104,889	103,993
Other Current Liabilities	7	39,091	12,099
GST Liability	8	(7,026)	19,066
		268,230	203,650
Non-Current Liabilities			
Creditors & Borrowings	5	292,050	69,476
Provisions	6	132,123	125,151
		424,173	194,627
Total Liabilities		692,403	398,277
Net Assets		5,100,050	3,752,288
Accumulated Funds			
Retained Earnings as at 1 July		1,888,764	1,637,366
Prior year adjustment to retained earnings	9	313,705	0
Surplus/(Deficit) for Year		1,047,704	251,398
		3,250,173	1,888,764
Building Fund Interest		0	13,647
Asset Revaluation Reserve	10	1,849,878	1,849,878
Total Funds		5,100,050	3,752,288

Financial Report - Notes to and forming part of the Accounts - Year end June 30, 2011

1. Summary of significant accounting policies

(a) Basis of accounting

This general purpose financial report has been prepared on the basis of historical costs and has not been adjusted to take account of changing monetary values except where stated. Accounting policies have been consistently applied unless otherwise stated.

(b) Depreciation

Non-current assets are depreciated over their estimated useful lives.

(c) Employee Benefits

Provision is made for the liability for annual leave and long service leave arising from services rendered by employees. The provision for long service leave includes the current legal obligation and expected future payment.

(d) Income Tax and GST

The Association being a charitable institution is exempt from Income Tax. Boarding fees and gardening program income has been ruled by the ATO as being GST free supplies.

	2011	2010
	\$	\$
2. Cash		
Cheque Account	0	281,389
Fundraising Account	17,567	11,891
ANZ Interest Bearing Account	156,217	104
Cash Management Account	96,670	94,757
Cash on Hand	8,568	342
Payroll Cheque Account	777	190
TPT Building Account	257,658	72,397
	537,457	461,071
3. Receivables		
Trade Debtors	39,208	50,581
Accrued Revenue	0	13,000
Sundry Debtors	1,063	0
	40,271	63,581

Financial Report - Notes to and forming part of the Accounts Year end June 30, 2011 (cont'd)

	2011	2010
	\$	\$
4. Non - Current Assets		
Land & Buildings - at cost	2,343,646	665,722
- additions for year	1,791,395	1,677,924
Total Cost	<u>4,135,041</u>	<u>2,343,646</u>
- valuation increment pre 2003	548,926	548,926
- valuation increment 2007	1,345,212	1,345,212
- valuation decrement 2008	<u>(44,260)</u>	<u>(44,260)</u>
Total Revaluation	1,849,878	1,849,878
Less Accumulated Depreciation	<u>964,205</u>	<u>818,855</u>
	5,020,714	3,374,669
Plant & Equipment at cost	431,862	422,193
Additions for year	2,000	28,315
	<u>433,862</u>	<u>450,508</u>
Less Disposals	<u>18,482</u>	<u>16,222</u>
	415,380	434,286
Less Accumulated Depreciation	<u>260,381</u>	<u>238,480</u>
	154,999	195,806
Motor Vehicles at cost	171,189	234,974
Additions for year	0	0
	<u>171,189</u>	<u>234,974</u>
Less Disposals	<u>22,651</u>	<u>63,785</u>
	148,538	171,189
Less Accumulated Depreciation	<u>109,526</u>	<u>115,751</u>
	39,012	55,438
5. Creditors & Borrowings		
Current		
ANZ Overdraft	55,572	0
ANZ Credit Card	1,158	0
Trade Creditors	21,908	0
Accrued Expenses	12,115	43,741
Boarding Fees received in advance	0	28,575
Sundry Creditors	<u>40,524</u>	<u>(3,824)</u>
	131,276	68,491

Financial Report - Notes to and forming part of the Accounts Year end June 30, 2011 (cont'd)

	2011	2010
	\$	\$
Non-Current		
Bonds Held	1,476	1,476
Advance - S.C.	100,000	60,000
Advance - D.L.	4,000	4,000
Advance - E.M.	4,000	4,000
Advance - D.N.	70,057	0
Advance - M.R.	154,517	0
Advance - Utilised in capital works	(42,000)	0
	292,050	69,476
6. Provisions		
Current		
Provision for Annual Leave	104,889	103,993
Non-Current		
Provision for Long Service Leave	132,123	125,151
7. Other Current Liabilities		
Advance Grants	39,091	12,099
8. GST Liability		
GST Collected	44,386	105,420
GST Paid	(51,412)	(86,353)
	(7,026)	19,066
9. Prior Year Adjustment to Retained Earnings		
Amount capitalised in 2010 that should have been recorded in the profit and loss against the Newstead Units grant	313,705	0
10. Asset Revaluation Reserve		
Revaluation pre 2003	548,926	548,926
Revaluation 2007 Buildings	1,415,600	1,415,600
Revaluation 2007 Sheds	9,543	9,543
Revaluation 2007 Newstead Units	(79,931)	(79,931)
Revaluation Newstead Units 2008	(44,260)	(44,260)
	1,849,878	1,849,878

Financial Report - Notes to and forming part of the Accounts As at June 30, 2011 (cont'd)

11. Capital Grants (AASB1004 Contributions)

Capital Grant 1

A capital grant totalling \$313,200 for unit development Stage 1 is repayable to the Commonwealth in the event that the Association ceases to operate under the terms of the Grant. The amount payable reduces proportionately over 30 years. As at the date of this report the amount is \$261,052.20. This contingent liability has not been recognised in the accounts in accordance with the Association's policy of accounting for capital grants.

Capital Grant 2

A capital grant totalling \$765,050 for unit development Stage 2 is repayable to the Commonwealth in the event that the Association ceases to operate under the terms of the Grant. The amount payable reduces proportionately over 30 years. As at the date of this report the amount is \$663,145.34. This contingent liability has not been recognised in the accounts in accordance with the Association's policy of accounting for capital grants.

Capital Grant 3

A capital grant totalling \$1,450,000 for unit development Stage 3 is repayable to the Commonwealth in the event that the Association ceases to operate under the terms of the Grant. The amount payable reduces proportionately over 30 years. As at the date of this report the amount is \$1,401,666.67. This contingent liability has not been recognised in the accounts in accordance with the Association's policy of accounting for capital grants.

Services offered at St Michaels

St. Michaels Association Day Program is an adult training program for people with special needs that require support in the development of the life skills that they may require to live independently in the community. The program operates from Monday to Friday, 8.30 am to 3 pm, most weeks of the year.

Merton House Adult Accommodation is a transitional program that provides accommodation and training for adults who are preparing to live independently in the community. The program operates in the evenings from 3.00 pm to 9.00 am Monday to Friday and 3.30 pm to 9.30 am Saturday and Sunday. The residents attend day programs within and outside the organisation.

Community Outreach Program started in 1995. The goals in this program are to give people assistance in their own home environment in the areas of life skills, personal care and budgeting and banking to maintain and develop their independent skills.

Community Housing
The Association also supports two Community Homes as a part of the Community Integration Program

(CIP). Each home accommodates 4 residents who are supported in the evenings 3.30 pm to 9.30 am, 7 days a week, with day support provided on Saturday and Sunday and the residents attend their day programs during the week.

Desmond Wood Complex – is a multi purpose facility that provides:

Student Accommodation for students under the age of sixteen who are attending special units in the education department. Accommodation is provided from Sunday evening to Friday morning during school terms.

Youthbreak is provided to children up to the age of 25 in the Desmond Wood Complex from Friday 4.00 pm to Sundays at 4.00 pm when funding is available.

DW Units there are also 3 independent units that are an extension of the Desmond Wood Complex and are accommodated by clients that are in the need of long term support in all areas of their care.

Individual Programs
St Michaels Association provides contracted support to individuals to

meet their specific needs. This support may be in their home, day or night, or at an educational or work facility. This program currently extends through to Southern Region where we provide support to young children with accessing their educational programs.

Social Club is held in the hall at St Michaels Association every Saturday Night from 6.00 pm to 9.30 pm. This is a time for clients to get together for a meal and engage in leisure activities of their choice such as card or board games, singing, dancing or enjoying a footy match on TV with a friend.

Independent Living Units are the most recent development at St Michaels Association. Each of the units provide independent living in a safe, supported environment. These units are more suited to clients with higher skills, requiring minimal support assistance.

Did you know?

The St Michaels Hall and kitchen facilities are available for hire.

If you are interested in hiring the facilities please call Lisa (03) 6331 7651 or email admin@stmichaels.asn.au
www.stmichaels.asn.au

News

The Independent is a bi-monthly newsletter that is distributed electronically.

General Display, Classified Line ads and Classified Display Advertising space is available, if you would like to advertise your business or receive your copy of The Independent please contact Rod Campbell on 6331 7651

Contact Details

St Michaels Association Inc.
22 Hoblers Bridge Road
PO Box 306 Newstead Tas 7250
Phone (03) 6331 7651 Fax (03) 6334 2132
admin@stmichaels.asn.au
www.stmichaels.asn.au
Friend us on Facebook and Twitter